



ROOF-H Roof fan

The power of AIR



Application

Range of centrifugal roof mounted fans in horizontal discharge format.

ROOF-H are designed for ventilation:

- warehouses, shop and industrial halls, farm buildings in agriculture, etc.

Due to their high temperature resistance, they are especially recommended as extractors:

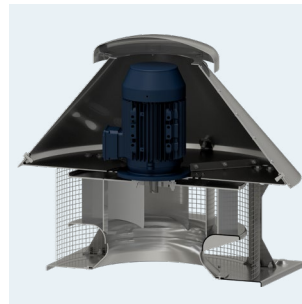
- from over grates, from hoods in the meat industry and gastronomy.

Construction

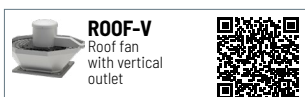
- rotors with backward blades are made of aluminum sheet,
- the base and outer casing are made of aluminum sheet,
- brackets and motor support plate are made of stainless steel,
- canopy made of aluminum sheet,
- rotor cover made of powder coated steel,
- designed for vertical work,
- suitable for mounting on flat roofs,
- working temperature -20°C to +120°C.

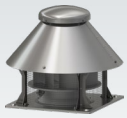
Motor

- asynchronous single-phase 230V 50Hz (power to 1,1 kW)
- asynchronous 3-phase 230 / 400V, 50Hz (power up to 3,0 kW),
- asynchronous 3-phase 400 / 690V, 50Hz (power from 4,0 kW),
- degree of protection IP55,
- insulation class F,
- three-phase motors are adapted for frequency converter.



RELATED PRODUCTS

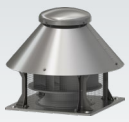




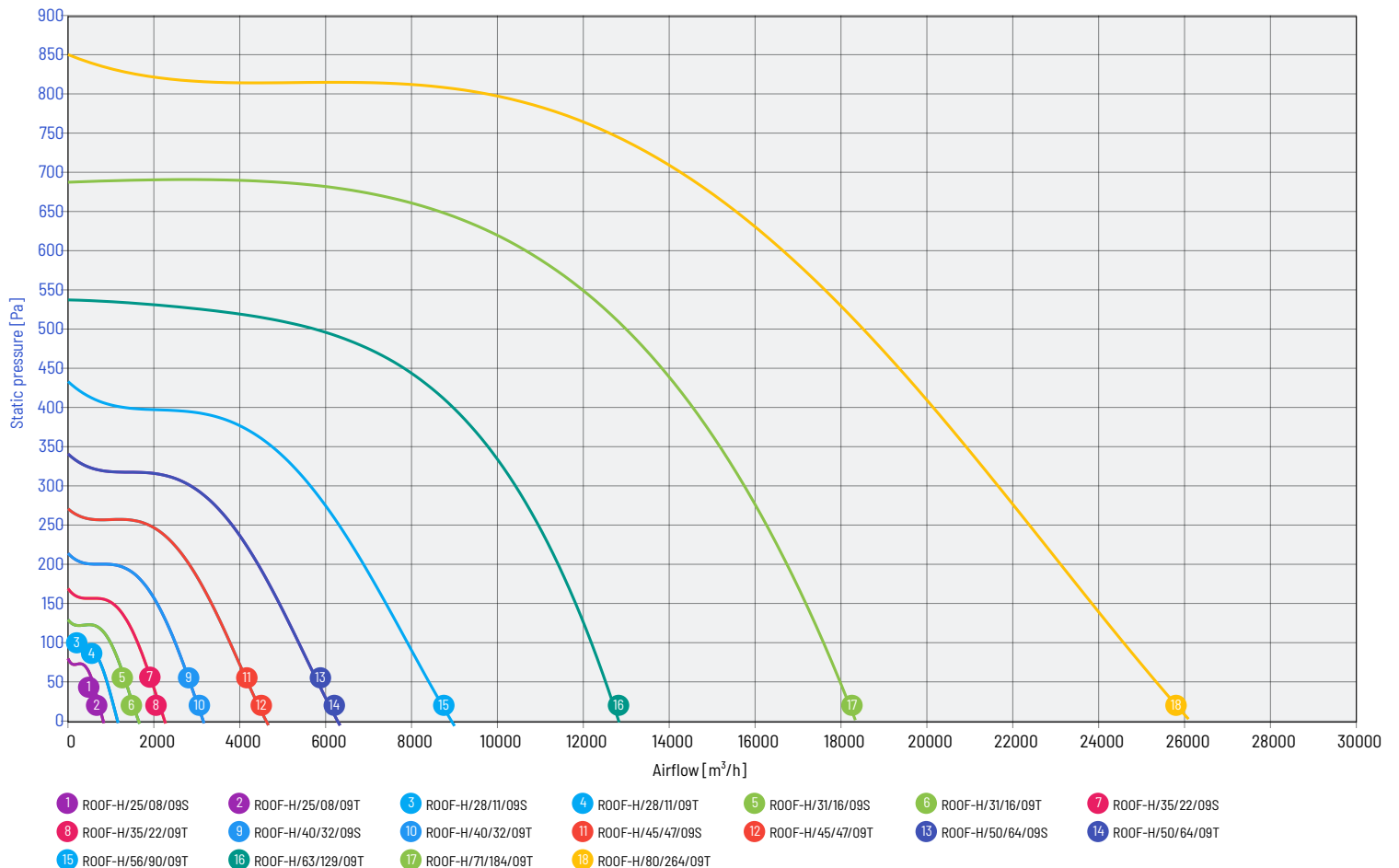
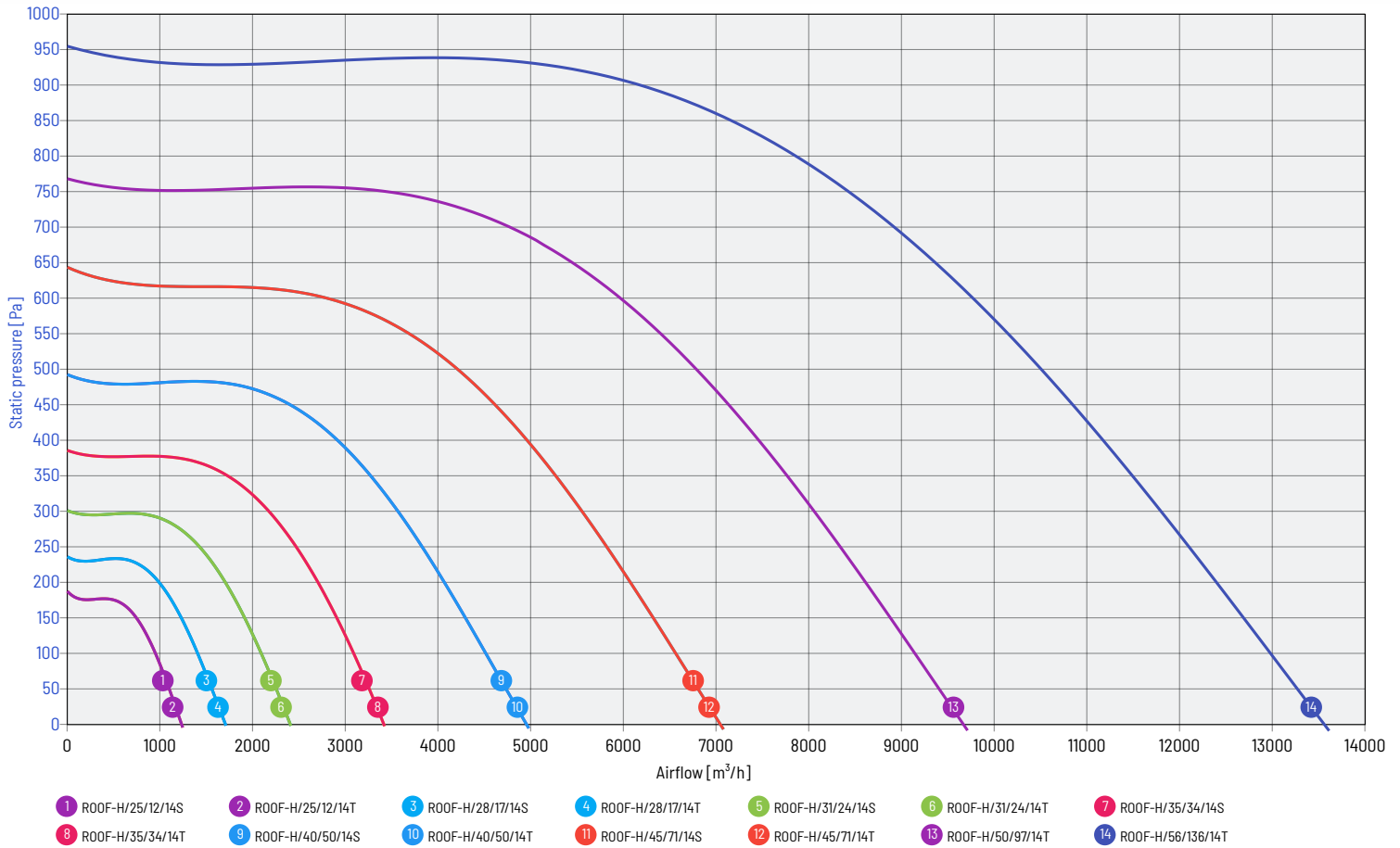
NOMINAL DATA

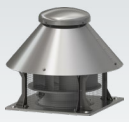
type	airflow max	pressure max	speed	voltage rated	current max abs.**	power max abs.	sound pressure level*	weight	article number
SINGLE-PHASE, 4-POLE MOTORS									
ROOF-H/25/12/14S	1 220 m ³ /h	185 Pa	1 420 rpm	230 V	1,4 A	0,18 kW	54 dB(A)	17,0 kg	433534396
ROOF-H/28/17/14S	1 700 m ³ /h	235 Pa	1 340 rpm	230 V	1,7 A	0,25 kW	57 dB(A)	19,0 kg	433534401
ROOF-H/31/24/14S	2 400 m ³ /h	300 Pa	1 420 rpm	230 V	2,8 A	0,37 kW	60 dB(A)	22,0 kg	43534406
ROOF-H/35/34/14S	3 400 m ³ /h	385 Pa	1 430 rpm	230 V	3,8 A	0,55 kW	63 dB(A)	32,0 kg	433534411
ROOF-H/40/50/14S	5 000 m ³ /h	490 Pa	1 430 rpm	230 V	4,1 A	0,75 kW	66 dB(A)	36,0 kg	43534416
ROOF-H/45/71/14S	7 100 m ³ /h	620 Pa	1 300 rpm	230 V	7,5 A	1,1 kW	69 dB(A)	50,0 kg	43534421
SINGLE-PHASE, 6-POLE MOTORS									
ROOF-H/25/08/09S	800 m ³ /h	80 Pa	880 rpm	230 V	1,4 A	0,12 kW	52 dB(A)	18,0 kg	43534398
ROOF-H/28/11/09S	1 100 m ³ /h	105 Pa	880 rpm	230 V	1,4 A	0,12 kW	54 dB(A)	18,0 kg	43534403
ROOF-H/31/16/09S	1 600 m ³ /h	130 Pa	880 rpm	230 V	1,4 A	0,12 kW	57 dB(A)	20,0 kg	43534408
ROOF-H/35/22/09S	2 250 m ³ /h	170 Pa	920 rpm	230 V	1,6 A	0,18 kW	60 dB(A)	28,0 kg	43534413
ROOF-H/40/32/09S	3 200 m ³ /h	215 Pa	940 rpm	230 V	2,3 A	0,25 kW	63 dB(A)	33,0 kg	43534418
ROOF-H/45/47/09S	4 700 m ³ /h	270 Pa	930 rpm	230 V	2,9 A	0,37 kW	66 dB(A)	44,0 kg	433534423
ROOF-H/50/64/09S	6 400 m ³ /h	340 Pa	940 rpm	230 V	5,2 A	0,75 kW	69 dB(A)	55,0 kg	43534428
THREE-PHASE, 4-POLE MOTORS									
ROOF-H/25/12/14T	1 220 m ³ /h	185 Pa	1 400 rpm	400 V	0,55 A	0,18 kW	54 dB(A)	19,0 kg	43534395
ROOF-H/28/17/14T	1 700 m ³ /h	235 Pa	1 410 rpm	400 V	0,8 A	0,25 kW	57 dB(A)	20,0 kg	43534400
ROOF-H/31/24/14T	2 400 m ³ /h	300 Pa	1 410 rpm	400 V	1,1 A	0,37 kW	60 dB(A)	23,0 kg	43534405
ROOF-H/35/34/14T	3 400 m ³ /h	385 Pa	1 420 rpm	400 V	1,6 A	0,55 kW	63 dB(A)	31,0 kg	43534410
ROOF-H/40/50/14T	5 000 m ³ /h	490 Pa	1 430 rpm	400 V	2,1 A	0,75 kW	66 dB(A)	36,0 kg	43534415
ROOF-H/45/71/14T	7 100 m ³ /h	620 Pa	1 430 rpm	400 V	2,5 A	1,1 kW	69 dB(A)	55,0 kg	43534420
ROOF-H/50/97/14T	9 700 m ³ /h	765 Pa	1 450 rpm	400 V	4,6 A	2,2 kW	73 dB(A)	73,0 kg	43534425
ROOF-H/56/136/14T	13 600 m ³ /h	950 Pa	1 460 rpm	400 V	6,7 A	3,0 kW	76 dB(A)	76,0 kg	43534430
THREE-PHASE, 6-POLE MOTORS									
ROOF-H/25/08/09T	800 m ³ /h	80 Pa	870 rpm	400 V	0,65 A	0,12 kW	52 dB(A)	17,0 kg	43534397
ROOF-H/28/11/09T	1 100 m ³ /h	105 Pa	870 rpm	400 V	0,65 A	0,12 kW	54 dB(A)	17,0 kg	43534402
ROOF-H/31/16/09T	1 600 m ³ /h	130 Pa	870 rpm	400 V	0,65 A	0,12 kW	57 dB(A)	19,0 kg	43534407
ROOF-H/35/22/09T	2 250 m ³ /h	170 Pa	900 rpm	400 V	0,7 A	0,18 kW	60 dB(A)	27,0 kg	43534412
ROOF-H/40/32/09T	3 200 m ³ /h	215 Pa	880 rpm	400 V	1,0 A	0,25 kW	63 dB(A)	31,0 kg	43534417
ROOF-H/45/47/09T	4 700 m ³ /h	270 Pa	880 rpm	400 V	1,3 A	0,37 kW	66 dB(A)	44,0 kg	43534422
ROOF-H/50/64/09T	6 400 m ³ /h	340 Pa	940 rpm	400 V	2,0 A	0,75 kW	69 dB(A)	56,0 kg	43534427
ROOF-H/56/90/09T	9 000 m ³ /h	430 Pa	940 rpm	400 V	2,8 A	1,1 kW	73 dB(A)	64,0 kg	43534432
ROOF-H/63/129/09T	12 900 m ³ /h	540 Pa	965 rpm	400 V	5,0 A	2,2 kW	74 dB(A)	105,0 kg	43534437
ROOF-H/71/184/09T	18 400 m ³ /h	690 Pa	965 rpm	400 V	6,2 A	3,0 kW	81 dB(A)	147,0 kg	43534442
ROOF-H/80/264/09T	26 400 m ³ /h	840 Pa	960 rpm	400 V	13,3 A	5,5 kW	85 dB(A)	190,0 kg	43534447

* Measurement made at a distance of 1.5m from the outlet, for $Q = 2/3 * Q_{max}$
 ** value of the rated current may vary depending on the manufacturer of the electric motor used.

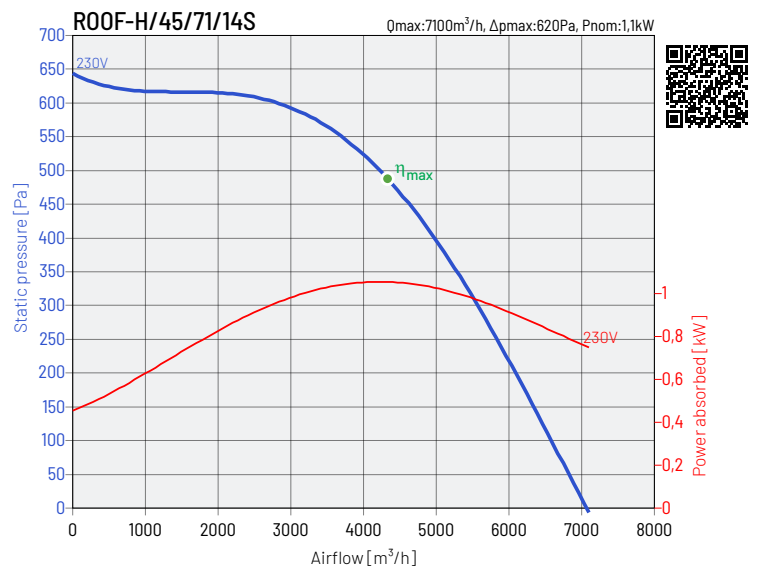
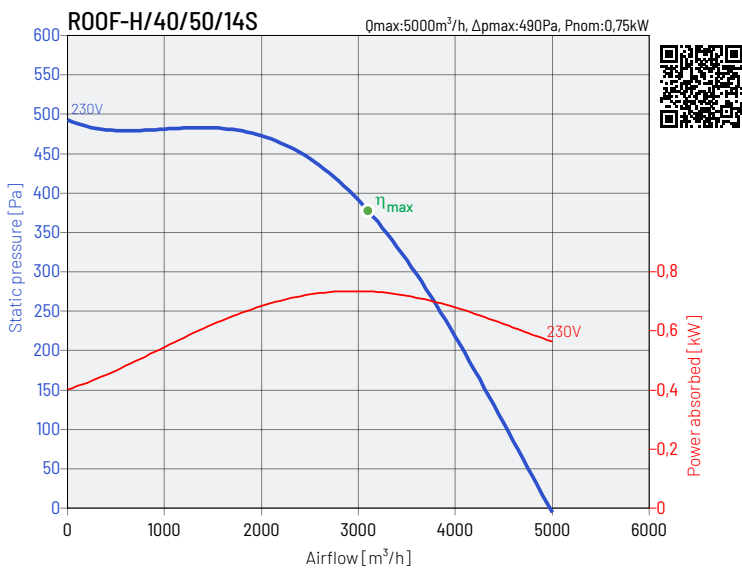
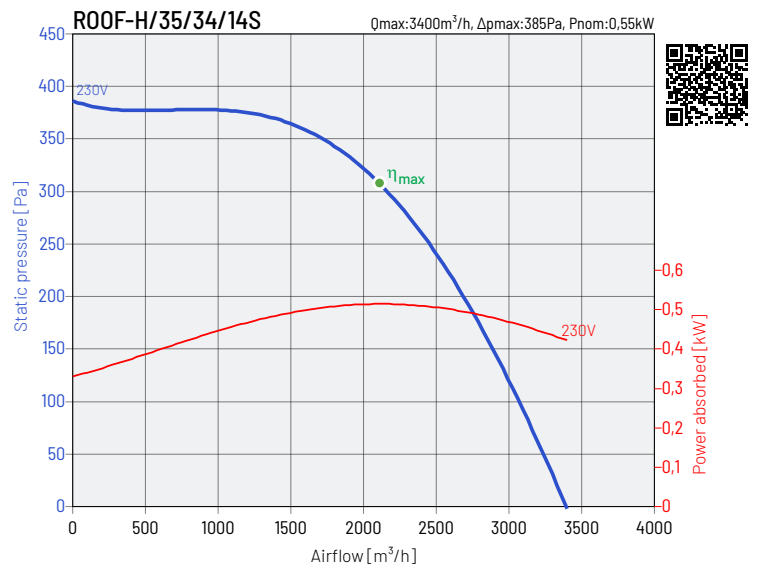
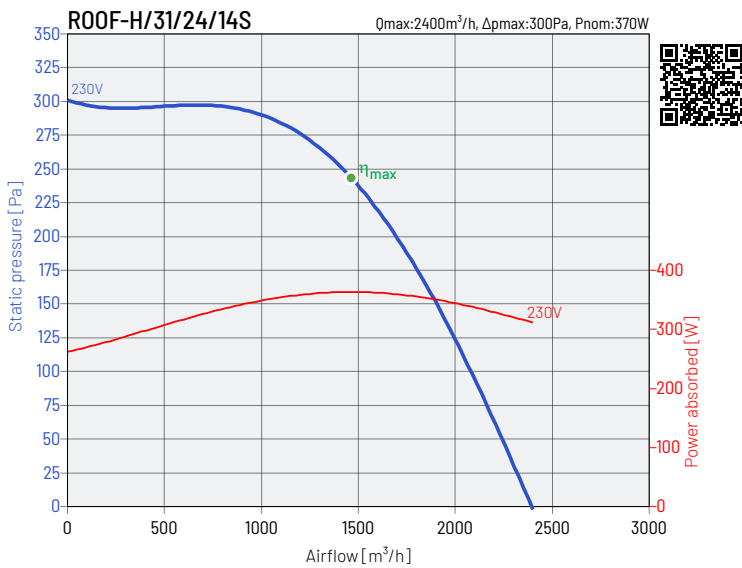
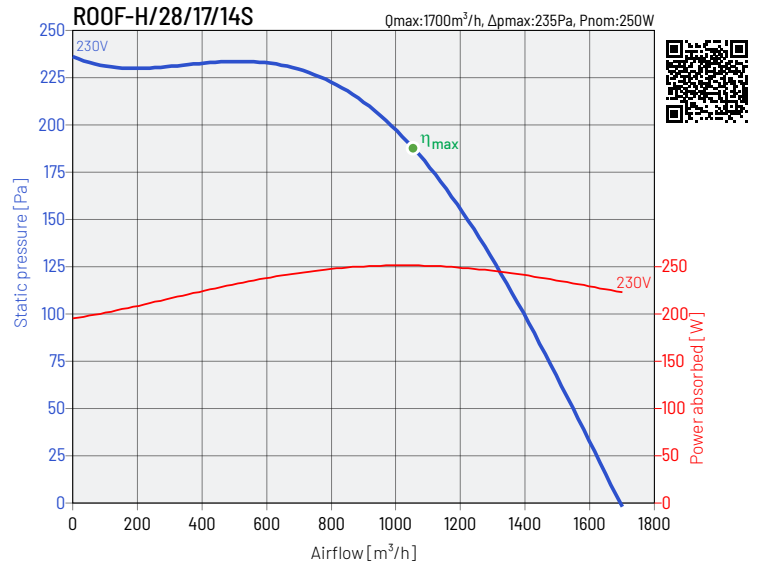
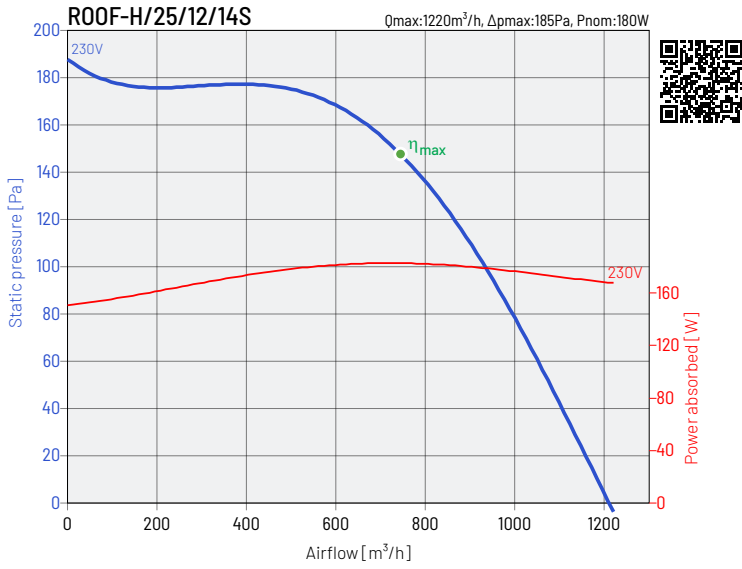


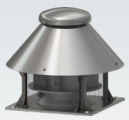
PERFORMANCE CHARACTERISTICS OF THE FANS



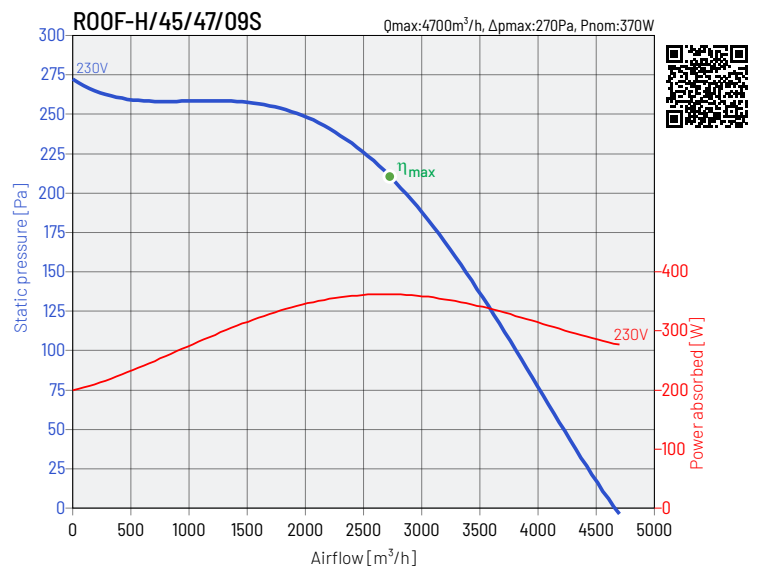
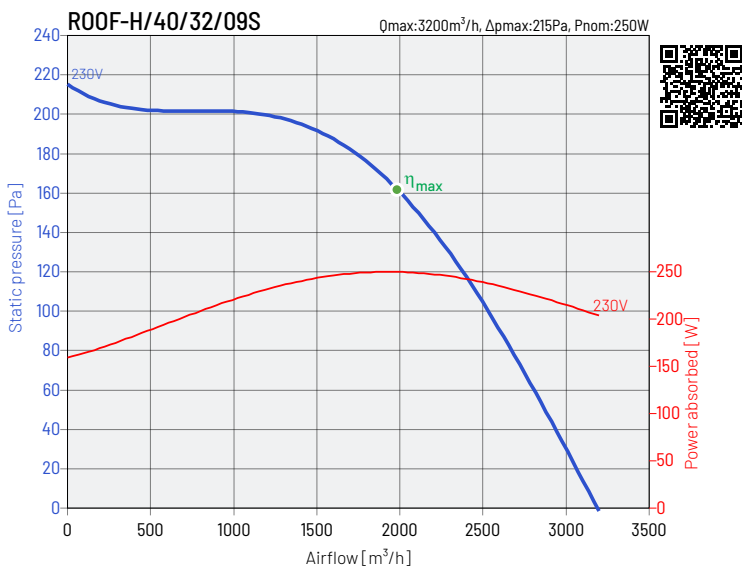
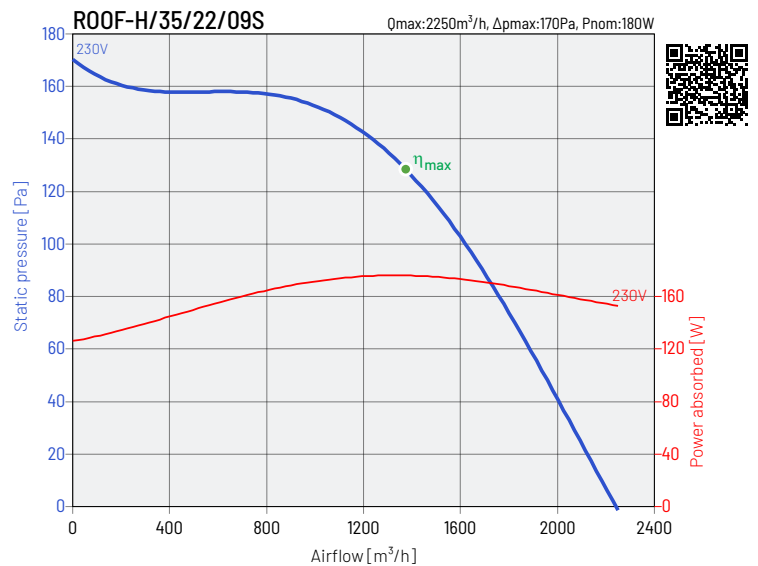
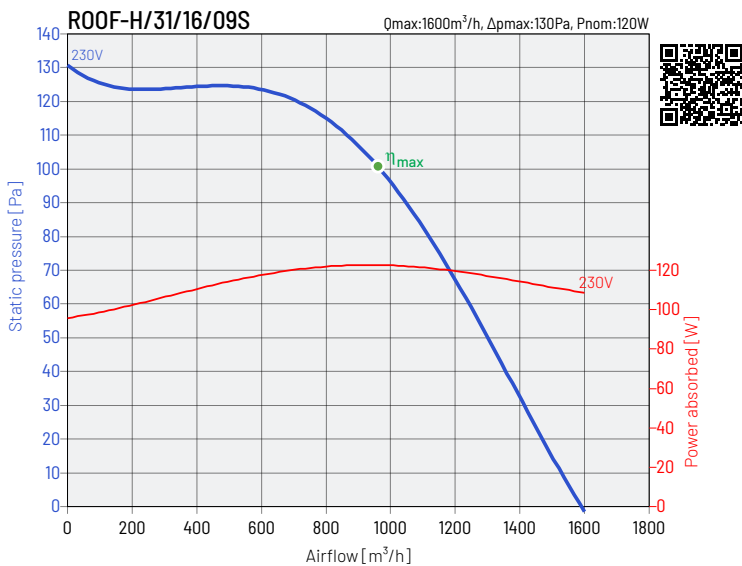
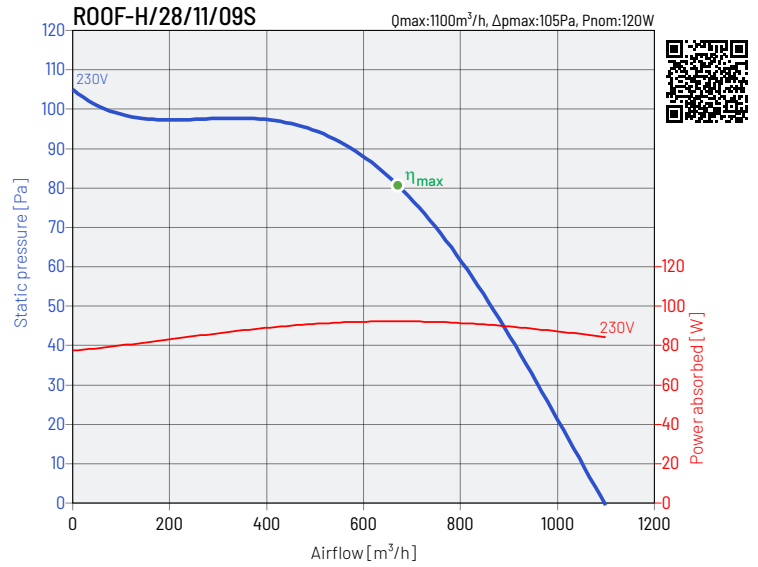
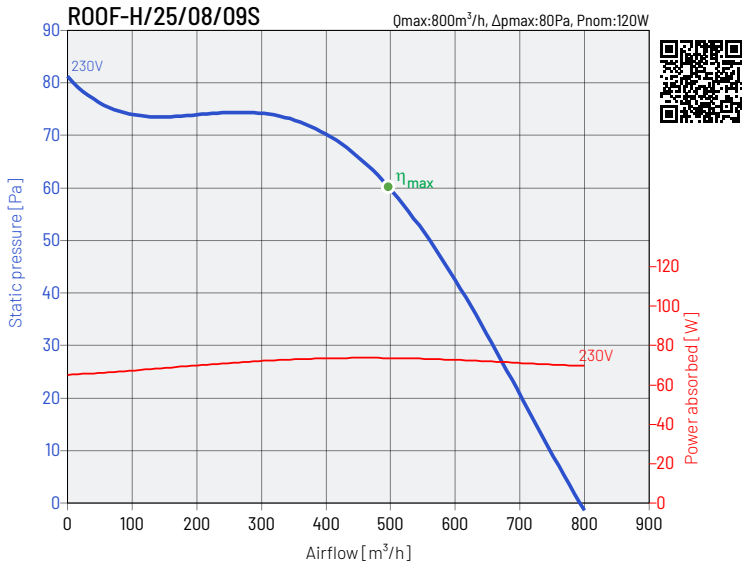


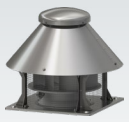
PERFORMANCE CHARACTERISTICS OF THE FANS



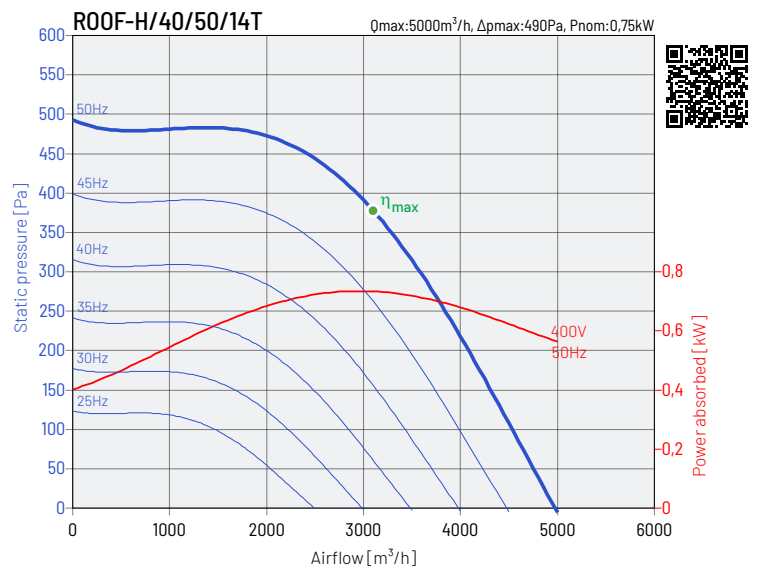
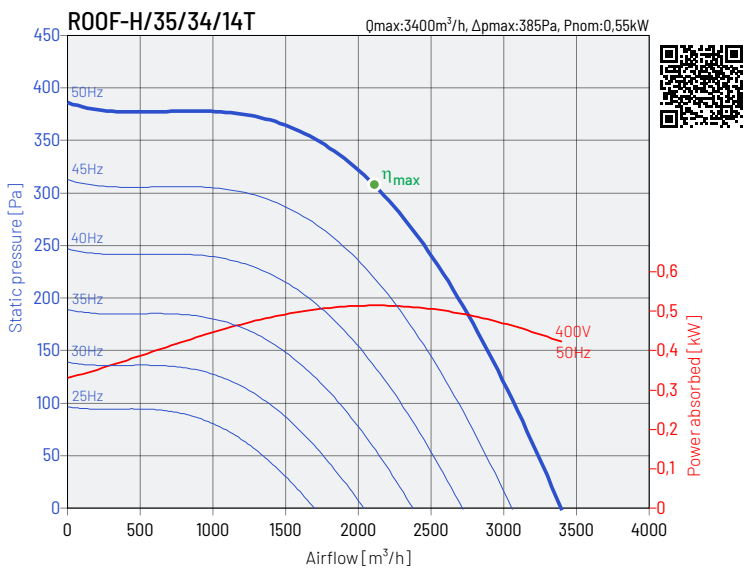
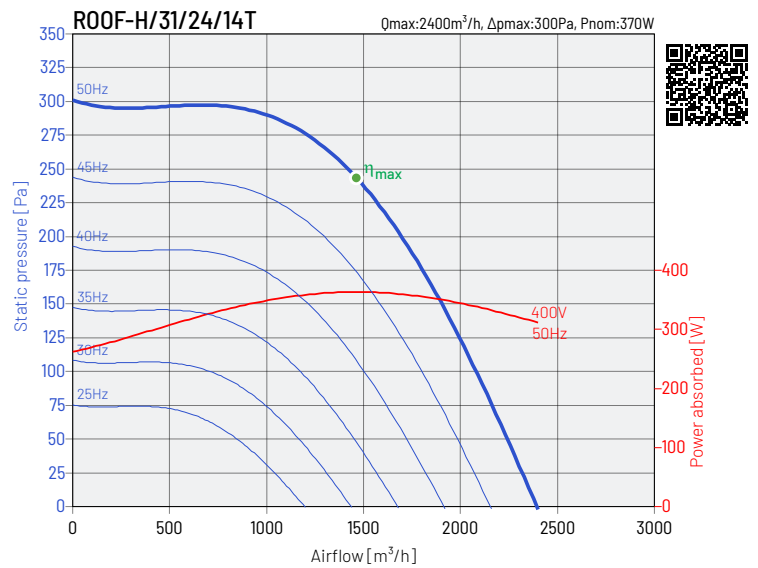
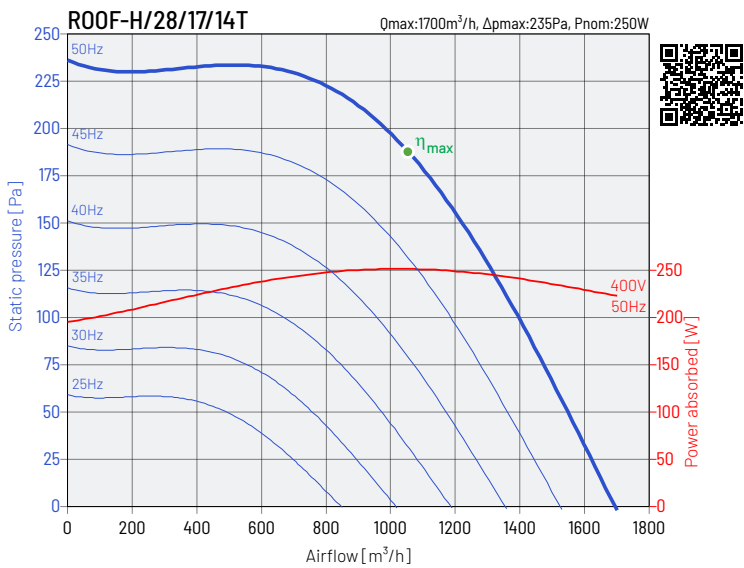
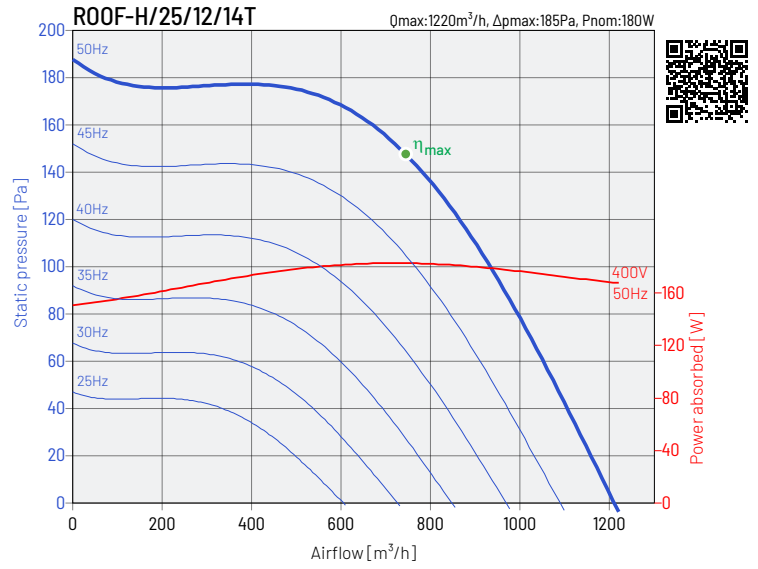
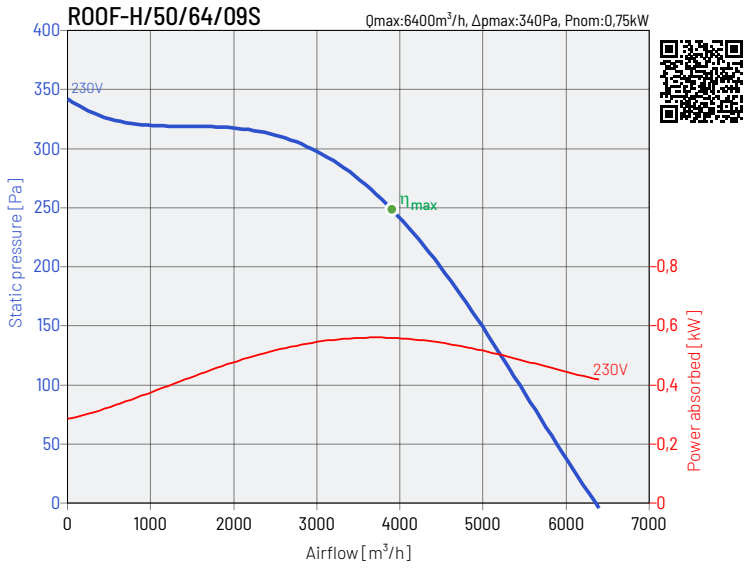


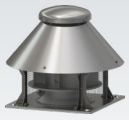
PERFORMANCE CHARACTERISTICS OF THE FANS



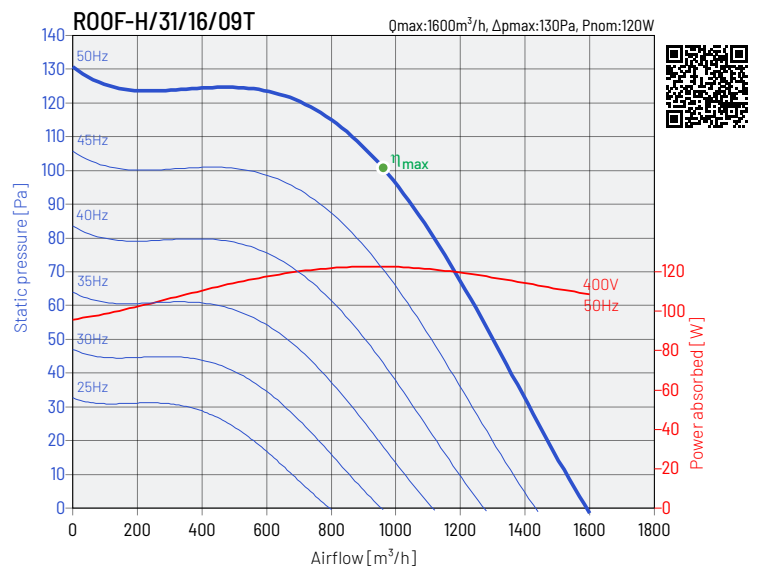
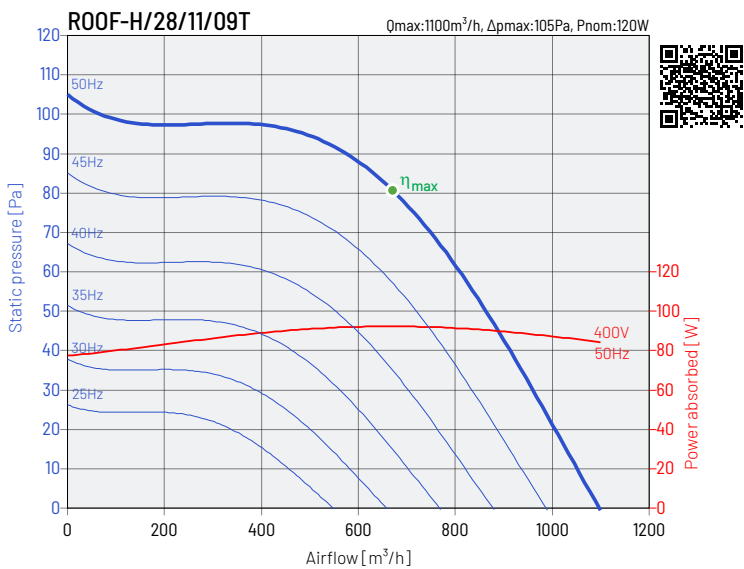
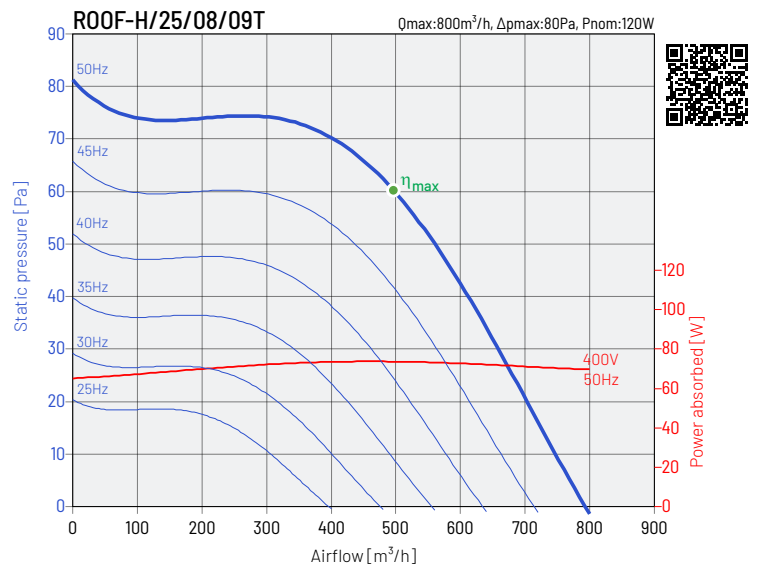
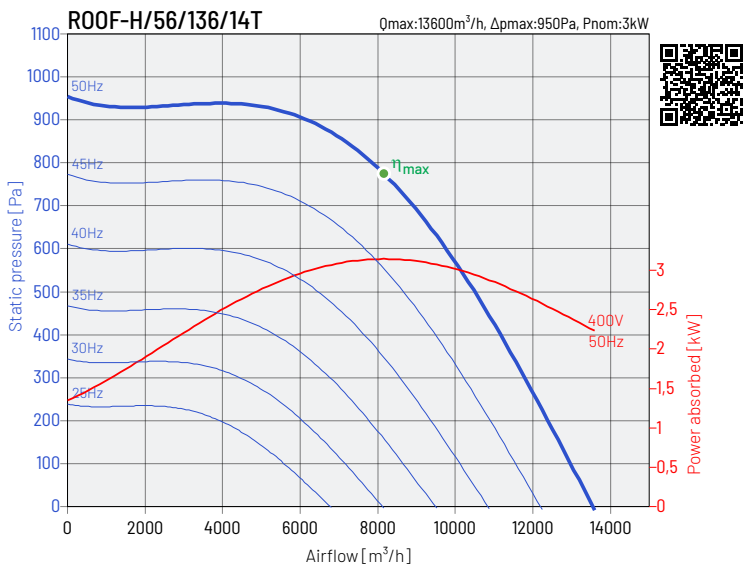
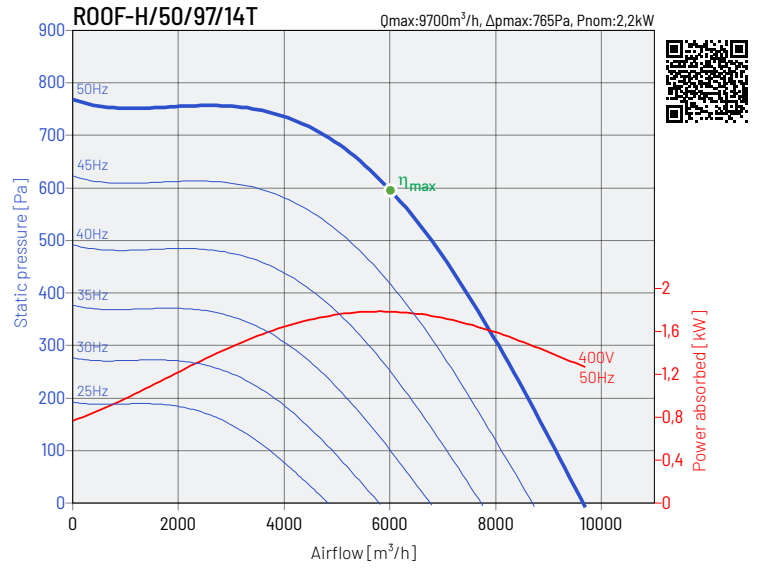
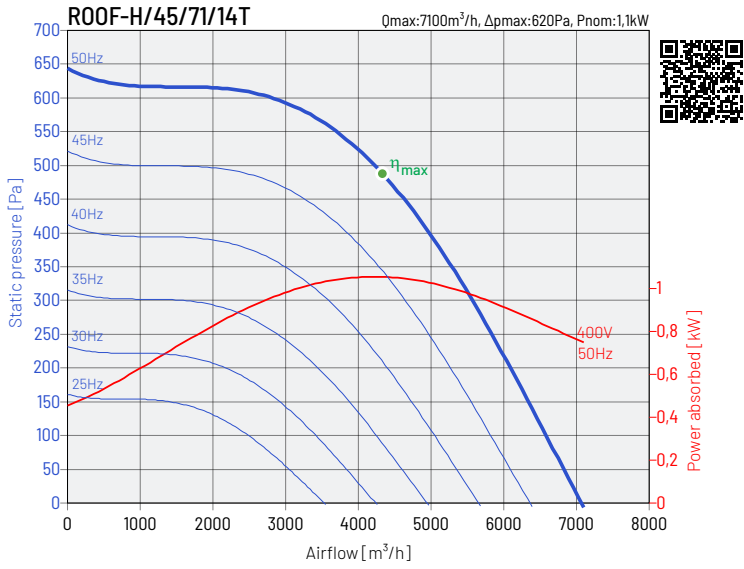


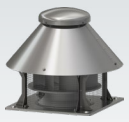
PERFORMANCE CHARACTERISTICS OF THE FANS



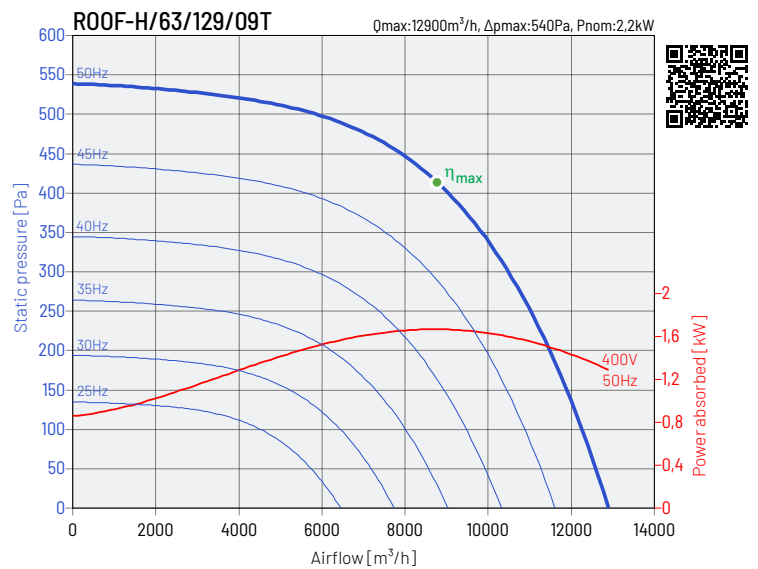
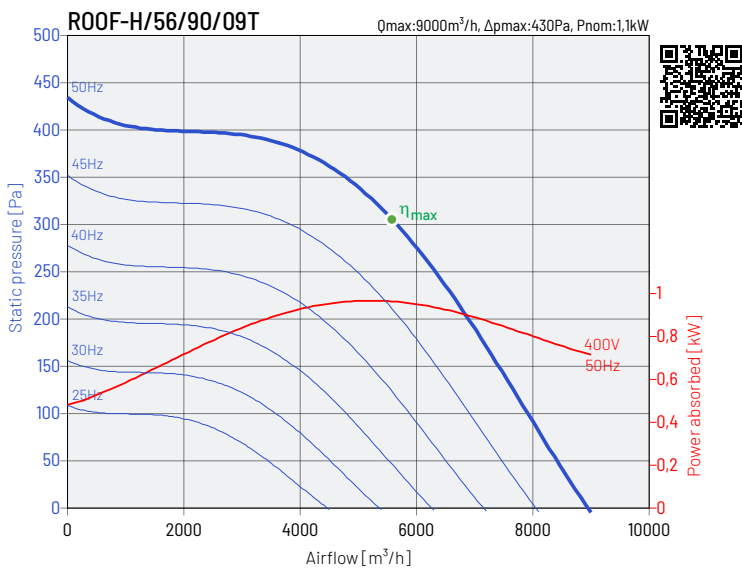
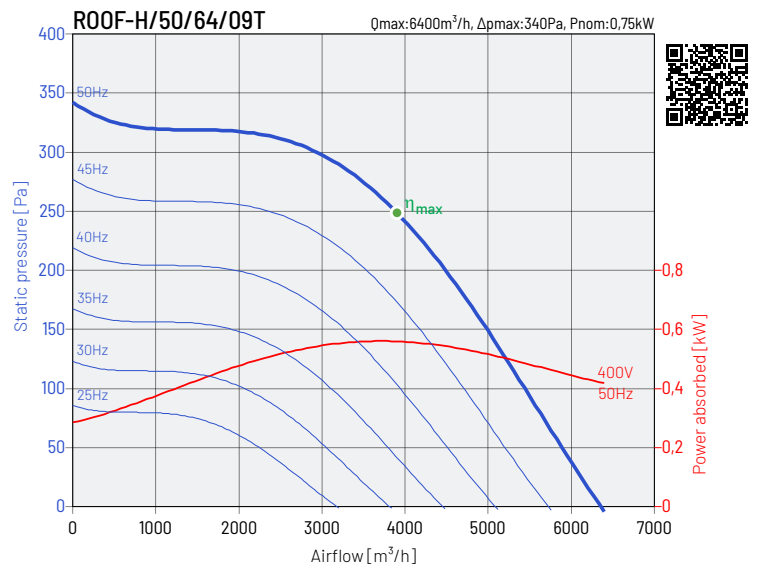
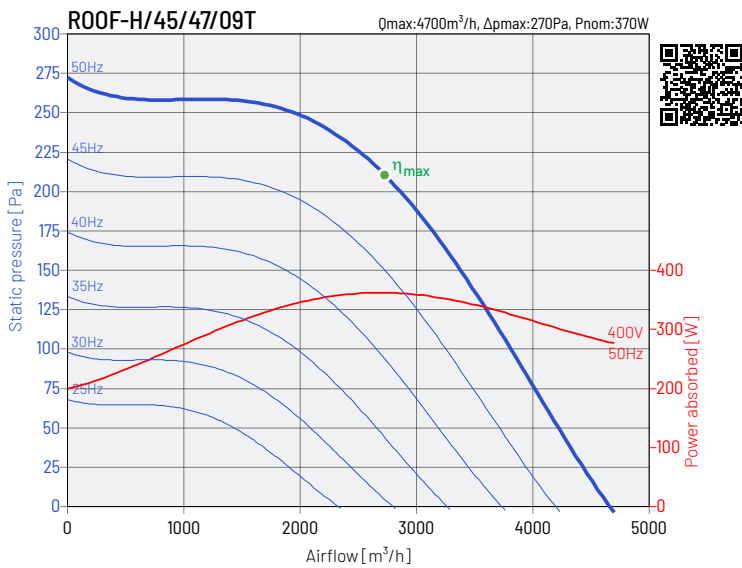
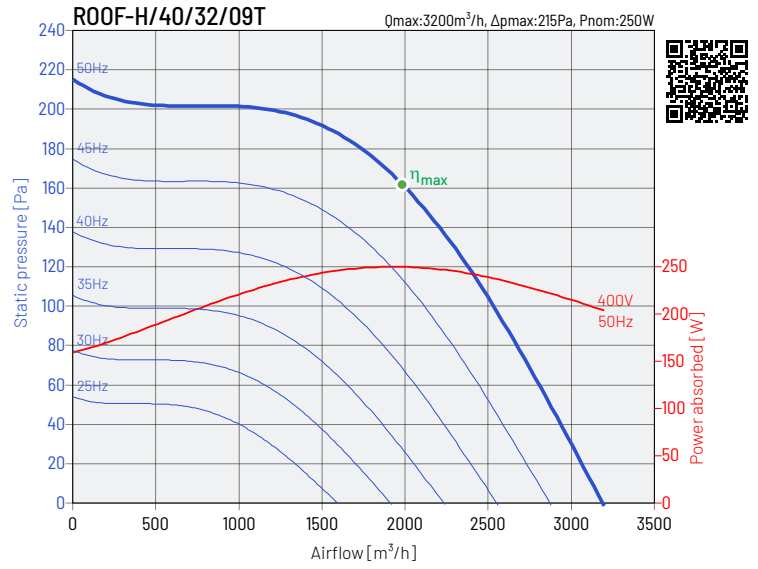
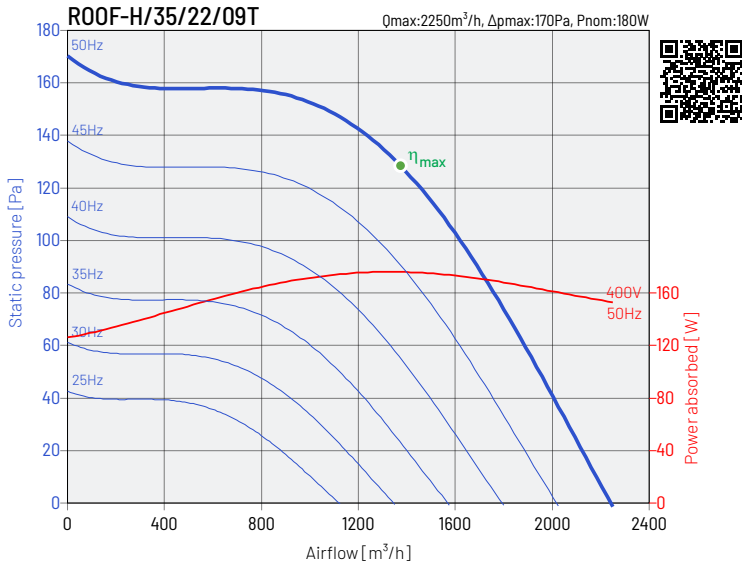


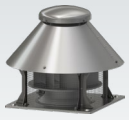
PERFORMANCE CHARACTERISTICS OF THE FANS



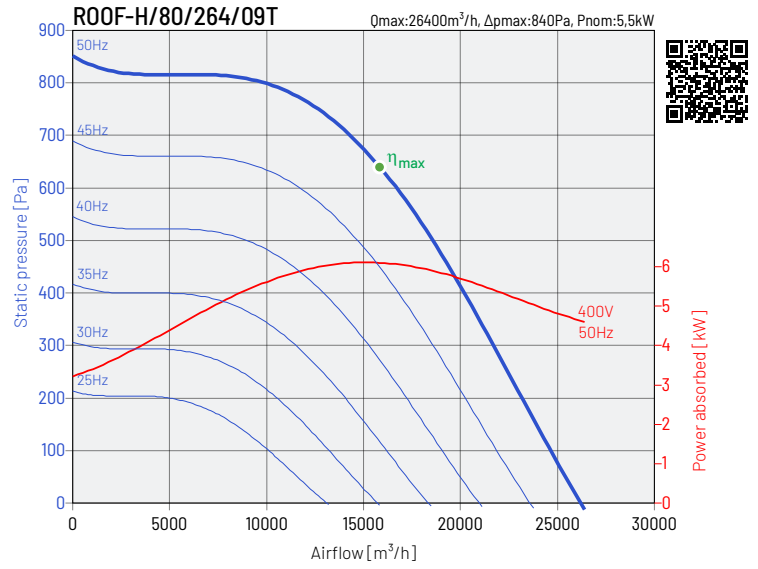
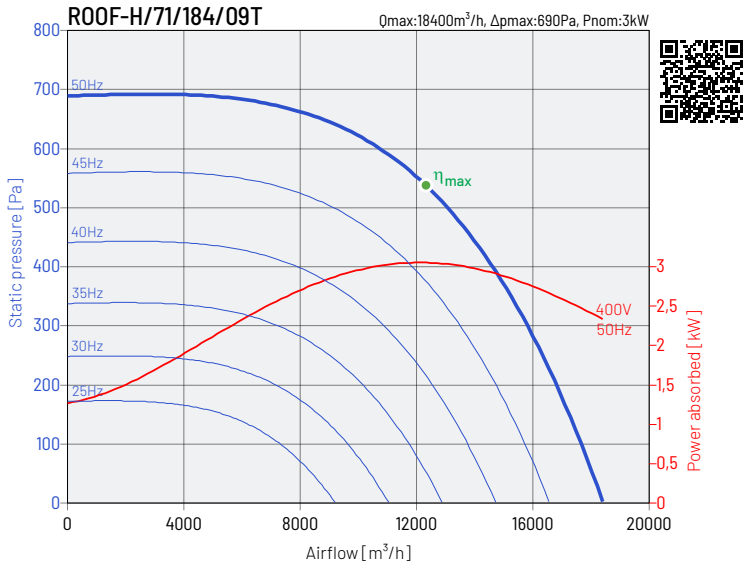


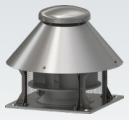
PERFORMANCE CHARACTERISTICS OF THE FANS





PERFORMANCE CHARACTERISTICS OF THE FANS



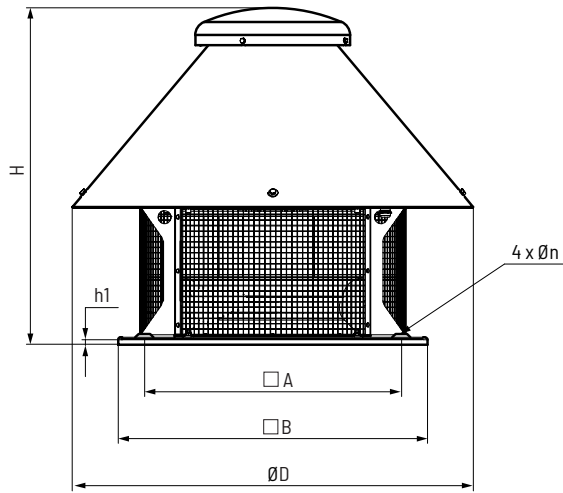


ROOF-H Roof fan

The power of AIR



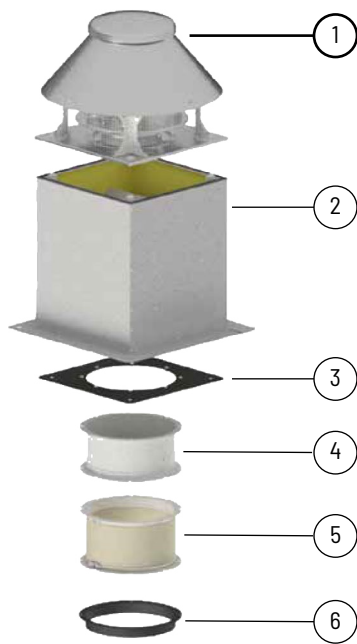
DIMENSIONS



type	A mm	B mm	ØD mm	H mm	h1 mm	Øn mm
ROOF-H/25	330	435	510	456	15	12
ROOF-H/28	330	435	510	456	15	12
ROOF-H/31	330	435	570	471	15	12
ROOF-H/35	450	560	680	606	15	12
ROOF-H/40	450	560	730	623	15	12
ROOF-H/45	535	630	800	666	15	12
ROOF-H/50	590	710	920	773	17	12
ROOF-H/56	590	710	1000	762	17	12
ROOF-H/63	750	900	1115	935	40	14
ROOF-H/71	750	900	1250	1060	40	14
ROOF-H/80	840	1100	1410	1185	40	14



MOUNTING ACCESSORIES



type	flat roof up RSS	flat roof up RS	flat roof up RS-I	flat roof up RSA	flat roof up RSA-I
ROOF-H/25	RSS 435	RS 435	RS-I 435	RSA 435	RSA-I 435
ROOF-H/28	RSS 435	RS 435	RS-I 435	RSA 435	RSA-I 435
ROOF-H/31	RSS 435	RS 435	RS-I 435	RSA 435	RSA-I 435
ROOF-H/35	RSS 560	RS 560	RS-I 560	RSA 560	RSA-I 560
ROOF-H/40	RSS 560	RS 560	RS-I 560	RSA 560	RSA-I 560
ROOF-H/45	RSS 630	RS 630	RS-I 630	RSA 630	RSA-I 630
ROOF-H/50	RSS 710	RS 710	RS-I 710	RSA 710	RSA-I 710
ROOF-H/56	RSS 710	RS 710	RS-I 710	RSA 710	RSA-I 710
ROOF-H/63	RSS 905	RS 905	RS-I 905	RSA 905	RSA-I 905
ROOF-H/71	RSS 905	RS 905	RS-I 905	RSA 905	RSA-I 905
ROOF-H/80	RSS 1100	RS 1100	RS-I 1100	RSA 1100	RSA-I 1100



type	mounting plate P	backflow preventer KZD SE	connector anti-vibration ZDPO	stub-pipe K
ROOF-H/25	P 435	KZD SE 435	ZDPO 435	K 435
ROOF-H/28	P 435	KZD SE 435	ZDPO 435	K 435
ROOF-H/31	P 435	KZD SE 435	ZDPO 435	K 435
ROOF-H/35	P 560	KZD SE 560	ZDPO 560	K 560
ROOF-H/40	P 560	KZD SE 560	ZDPO 560	K 560
ROOF-H/45	P 630	KZD SE 630	ZDPO 630	K 630
ROOF-H/50	P 710	KZD SE 710	ZDPO 710	K 710
ROOF-H/56	P 710	KZD SE 710	ZDPO 710	K 710
ROOF-H/63	P 905	KZD SE 905	ZDPO 905	K 905
ROOF-H/71	P 905	KZD SE 905	ZDPO 905	K 905
ROOF-H/80	P 1100	KZD SE 1100	ZDPO 1100	K 1100

Article numbers

43526520 RSS 435	43526020 RS 435	43526120 RSA 435	43526310 P 435	43527410 ZDPO 435	43526410 K 435
43526530 RSS 560	43526030 RS 560	43526130 RSA 560	43526320 P 560	43527420 ZDPO 560	43526420 K 560
43526540 RSS 630	43526040 RS 630	43526140 RSA 630	43526330 P 630	43527430 ZDPO 630	43526430 K 630
43526550 RSS 710	43526050 RS 710	43526150 RSA 710	43526340 P 710	43527440 ZDPO 710	43526440 K 710
43526560 RSS 905	43526060 RS 905	43526160 RSA 905	43526350 P 905	43527450 ZDPO 905	43526450 K 905
43526570 RSS 1100	43526070 RS 1100	43526170 RSA 1100	43526360 P 1100	43527460 ZDPO 1100	43526460 K 1100
43526580 RSS 1250	43526080 RS 1250	43526180 RSA 1250	43526370 P 1250	43527470 ZDPO 1250	43526470 K 1250
	43526721 RS-I 435	43526821 RSA-I 435	43527312 KZD SE 435		
	43526731 RS-I 560	43526831 RSA-I 560	43527322 KZD SE 560		
	43526741 RS-I 630	43526841 RSA-I 630	43527332 KZD SE 630		
	43526751 RS-I 710	43526851 RSA-I 710	43527342 KZD SE 710		
	43526761 RS-I 905	43526861 RSA-I 905	43527352 KZD SE 905		
	43526771 RS-I 1100	43526871 RSA-I 1100	43527362 KZD SE 1100		
	43526781 RS-I 1250	43526881 RSA-I 1250	43527372 KZD SE 1250		



ELECTRICAL ACCESSORIES



type	wall thermostat	duct thermostat	sensor temperature	air quality sensor	humidistat
	TS*	TK-21	for TK-21	SQA	HIG-2
ROOF-H/25/12/14S	TS	TK-21	Sensor TK-21	SQA	HIG-2
ROOF-H/28/17/14S	TS	TK-21	Sensor TK-21	SQA + DILM7-10	HIG-2 + DILM7-10
ROOF-H/31/24/14S	TS + DILM7-10	TK-21	Sensor TK-21	SQA + DILM7-10	HIG-2 + DILM7-10
ROOF-H/35/34/14S	TS + DILM7-10	TK-21 + DILM7-10	Sensor TK-21	SQA + DILM7-10	HIG-2 + DILM7-10
ROOF-H/40/50/14S	TS + DILM7-10	TK-21 + DILM7-10	Sensor TK-21	SQA + DILM7-10	HIG-2 + DILM7-10
ROOF-H/45/71/14S	TS + DILM7-10	TK-21 + DILM7-10	Sensor TK-21	SQA + DILM7-10	HIG-2 + DILM7-10
ROOF-H/25/08/09S	TS	TK-21	Sensor TK-21	SQA	HIG-2
ROOF-H/28/11/09S	TS	TK-21	Sensor TK-21	SQA	HIG-2
ROOF-H/31/16/09S	TS	TK-21	Sensor TK-21	SQA	HIG-2
ROOF-H/35/22/09S	TS	TK-21	Sensor TK-21	SQA	HIG-2
ROOF-H/40/32/09S	TS	TK-21	Sensor TK-21	SQA + DILM7-10	HIG-2 + DILM7-10
ROOF-H/45/47/09S	TS + DILM7-10	TK-21	Sensor TK-21	SQA + DILM7-10	HIG-2 + DILM7-10
ROOF-H/50/64/09S	TS + DILM7-10	TK-21 + DILM7-10	Sensor TK-21	SQA + DILM7-10	HIG-2 + DILM7-10
ROOF-H/25/12/14T	TS + DILM7-10	TK-21 + DILM7-10	Sensor TK-21	SQA + DILM7-10	HIG-2 + DILM7-10
ROOF-H/28/16/14T	TS + DILM7-10	TK-21 + DILM7-10	Sensor TK-21	SQA + DILM7-10	HIG-2 + DILM7-10
ROOF-H/31/23/14T	TS + DILM7-10	TK-21 + DILM7-10	Sensor TK-21	SQA + DILM7-10	HIG-2 + DILM7-10
ROOF-H/35/33/14T	TS + DILM7-10	TK-21 + DILM7-10	Sensor TK-21	SQA + DILM7-10	HIG-2 + DILM7-10
ROOF-H/40/48/14T	TS + DILM7-10	TK-21 + DILM7-10	Sensor TK-21	SQA + DILM7-10	HIG-2 + DILM7-10
ROOF-H/45/68/14T	TS + DILM7-10	TK-21 + DILM7-10	Sensor TK-21	SQA + DILM7-10	HIG-2 + DILM7-10
ROOF-H/50/93/14T	TS + DILM7-10	TK-21 + DILM7-10	Sensor TK-21	SQA + DILM7-10	HIG-2 + DILM7-10
ROOF-H/56/130/14T	TS + DILM7-10	TK-21 + DILM7-10	Sensor TK-21	SQA + DILM7-10	HIG-2 + DILM7-10
ROOF-H/25/08/09T	TS + DILM7-10	TK-21 + DILM7-10	Sensor TK-21	SQA + DILM7-10	HIG-2 + DILM7-10
ROOF-H/28/11/09T	TS + DILM7-10	TK-21 + DILM7-10	Sensor TK-21	SQA + DILM7-10	HIG-2 + DILM7-10
ROOF-H/31/16/09T	TS + DILM7-10	TK-21 + DILM7-10	Sensor TK-21	SQA + DILM7-10	HIG-2 + DILM7-10
ROOF-H/35/21/09T	TS + DILM7-10	TK-21 + DILM7-10	Sensor TK-21	SQA + DILM7-10	HIG-2 + DILM7-10
ROOF-H/40/31/09T	TS + DILM7-10	TK-21 + DILM7-10	Sensor TK-21	SQA + DILM7-10	HIG-2 + DILM7-10
ROOF-H/45/46/09T	TS + DILM7-10	TK-21 + DILM7-10	Sensor TK-21	SQA + DILM7-10	HIG-2 + DILM7-10
ROOF-H/50/62/09T	TS + DILM7-10	TK-21 + DILM7-10	Sensor TK-21	SQA + DILM7-10	HIG-2 + DILM7-10
ROOF-H/56/88/09T	TS + DILM7-10	TK-21 + DILM7-10	Sensor TK-21	SQA + DILM7-10	HIG-2 + DILM7-10
ROOF-H/63/125/09T	TS + DILM7-10	TK-21 + DILM7-10	Sensor TK-21	SQA + DILM7-10	HIG-2 + DILM7-10
ROOF-H/71/178/09T	TS + DILM7-10	TK-21 + DILM7-10	Sensor TK-21	SQA + DILM7-10	HIG-2 + DILM7-10
ROOF-H/80/256/09T	TS + DILM15-10	TK-21 + DILM15-10	Sensor TK-21	SQA + DILM15-10	HIG-2 + DILM15-10

* single phase motor use all tracks in the contactor



ROOF-H Roof fan

The power of AIR



ELECTRICAL ACCESSORIES



type	transformer regulator 2-adjustable	inverter
	SC2A	L
ROOF-H/25/12/14T	SC2A4-15L55	L 0.4kW
ROOF-H/28/16/14T	SC2A4-15L55	L 0.4kW
ROOF-H/31/23/14T	SC2A4-15L55	L 0.4kW
ROOF-H/35/33/14T	SC2A4-25L55	L 0.75kW
ROOF-H/40/48/14T	SC2A4-25L55	L 0.75kW
ROOF-H/45/68/14T	SC2A4-40L55	L 1.5kW
ROOF-H/50/93/14T	SC2A4-60L55	L 2.2kW
ROOF-H/56/130/14T	SC2A4-80L55	L 4.0kW
ROOF-H/25/08/09T	SC2A4-15L55	L 0.4kW
ROOF-H/28/11/09T	SC2A4-15L55	L 0.4kW
ROOF-H/31/16/09T	SC2A4-15L55	L 0.4kW
ROOF-H/35/21/09T	SC2A4-15L55	L 0.4kW
ROOF-H/40/31/09T	SC2A4-15L55	L 0.4kW
ROOF-H/45/46/09T	SC2A4-15L55	L 0.4kW
ROOF-H/50/62/09T	SC2A4-25L55	L 0.75kW
ROOF-H/56/88/09T	SC2A4-40L55	L 1.5kW
ROOF-H/63/125/09T	SC2A4-40L55	L 2.2kW
ROOF-H/71/178/09T	SC2A4-80L55	L 4.0kW
ROOF-H/80/256/09T	-	L 5.5kW

Article numbers

91040997	DILM7-10	40025270	SC2A4-15L55	40016302	L 0.4kW
91040666-42	DILM15-10	40025272	SC2A4-25L55	40016312	L 0.75kW
91040905	DILM25-10	40025274	SC2A4-40L55	40016322	L 1.5kW
91040666	DILM40-10	40025276	SC2A4-60L55	40016332	L 2.2kW
40025345	TS	40025278	SC2A4-80L55	40016352	L 4.0kW
40025320	TK-21			40016362	L 5.5kW
40025140	SQA			40016383	L 11kW
40025150	HIG-2			40016412	L 18,5kW